

# SKB

## KNEE BRACE KIT

### SAMPLE SPECIFICATION

specify as: SOFTFORMS® Model # SKB

#### Pittcon SOFTFORMS® LLC

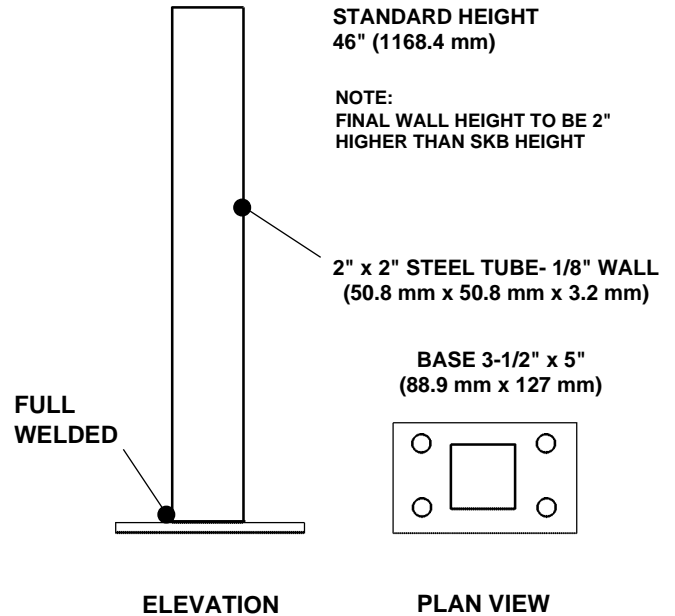
6409 Rhode Island Avenue  
Riverdale, MD 20737  
(800) 637-7638  
(301) 927-1000

3330 W. Flower Street  
Phoenix, AZ 85017  
(800) 637-7638  
(602) 233-9100

The welded steel assembly consists of a 2" x 2" tube, 1/8" wall and 3 1/2" x 5" x 1/4" thick base plate with 4 holes 7/16" diameter. The assembly shall be provided with a flat black primer resulting in a corrosive resistant surface compatible with plaster, joint compounds and interior finishes.

**MATERIAL:** Cold roll steel plate and steel tubing  
Finish.....Factory primed  
Metal thickness.....As per above

*Note: Other sizes and configurations are available upon request, with some restrictions applying. Check factory for your needs.*



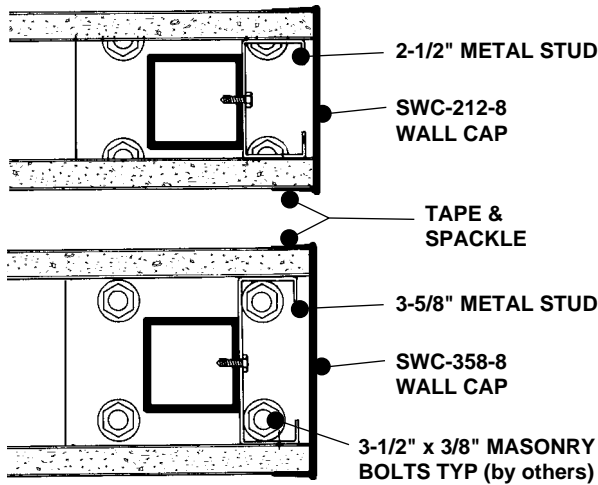
Pittcon recommends using 3/8" x 3 1/2" masonry fasteners with expansion shields for mounting in concrete floor. (Not provided)

**SECTION SKB** **KNEE BRACE**  
**NO SCALE** **ELEVATION & PLAN**

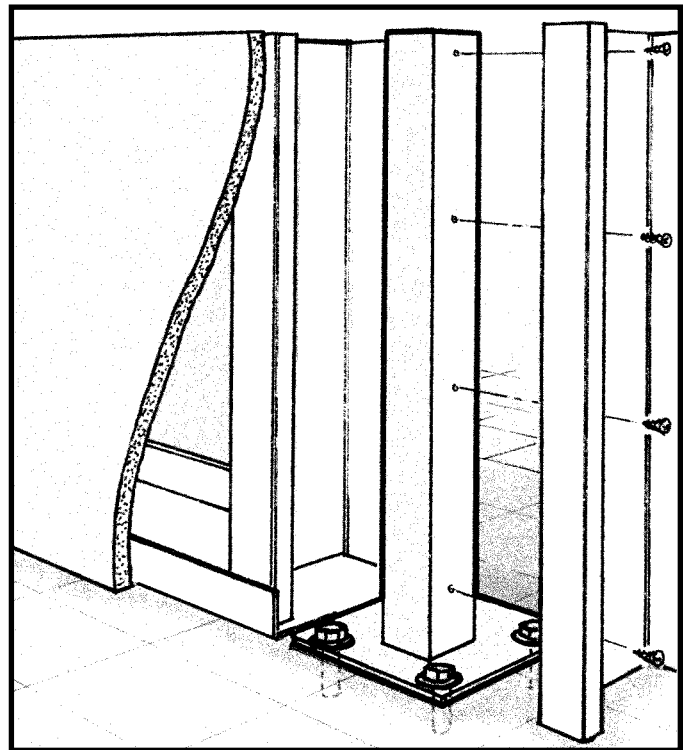
### EXAMPLE DETAIL

For use with conventional metal stud construction and 5/8" GPDW.

The SKB knee brace permits construction of low wall partitions with free standing end(s). Concealed entirely within the stud wall and anchored to the floor and studs, it provides a reinforced structure subject to substantial side loading when installed properly.



**SKB** **STUD PARTITIONS**  
**NO SCALE** **PLAN VIEWS**



All details, methods and specifications are the exclusive property of Pittcon Softforms® LLC. Pittcon reserves the right to change any specifications or details without prior notification. All Softforms® profiles are available in standard 10' lengths ± 1/8" (2.048 M). Other lengths are available as special order items. For custom shapes, sizes, or for special finishes, please contact the factory or your nearest Pittcon sales representative.

© 2008 Pittcon SOFTFORMS® LLC.

# Softforms

PREFORMED ARCHITECTURAL PROFILES  
FOR DRYWALL CONSTRUCTION