

# SO-ER-90

## CORNER WITH REVEAL

### SAMPLE SPECIFICATION

specify as: SOFTFORMS® Model # SO-ER-90

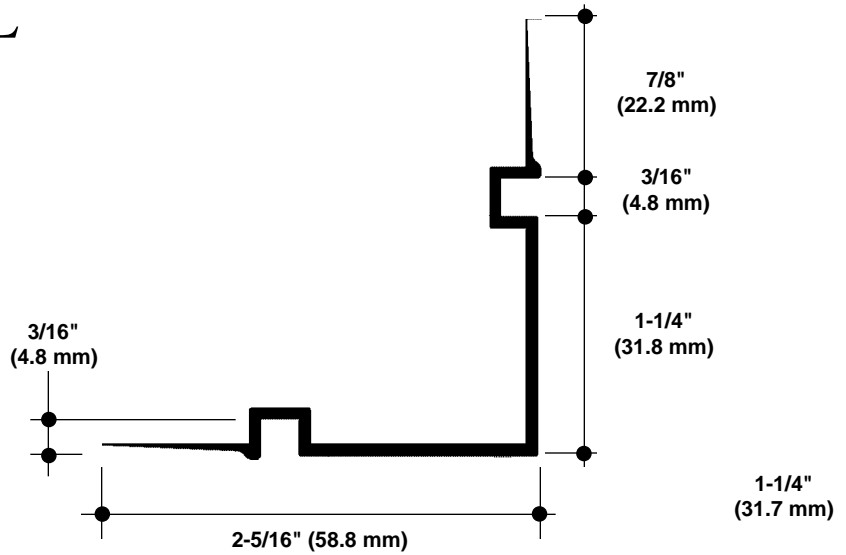
### Pittcon SOFTFORMS® LLC

6409 Rhode Island Avenue  
Riverdale, MD 20737  
(800) 637-7638  
(301) 927-1000  
Fax: (301) 699-8690

3330 W. Flower Street  
Phoenix, AZ 85017  
(800) 637-7638  
(602) 233-9100  
Fax: (602) 233-9400

The extruded aluminum profile shall incorporate a continuous integral fin for surface contact to conventionally installed gypsum drywall. The fins shall be 7/8" wide and shall be tapered to the edge. The tapered fins shall be punched with holes staggered to accept standard screw fastening. A series of continuous grooves shall be extruded into the face of the fins to provide greater bonding surface. The extruded profiles shall be primed with corrosion-resistant primer compatible with materials normally in use in conjunction with commercial interiors, i.e.: joint compound, latex and enamel paints, and wall covering adhesives.

MATERIAL: Aluminum alloy.....6063 T5 or equal  
Finish.....Factory primed



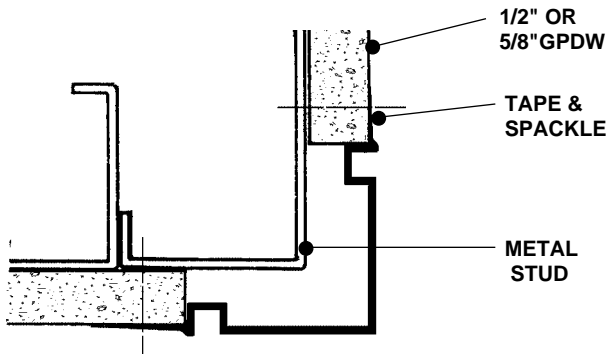
SO-ER-90  
NO SCALE

CORNER WITH REVEAL  
SECTION

### EXAMPLE DETAIL

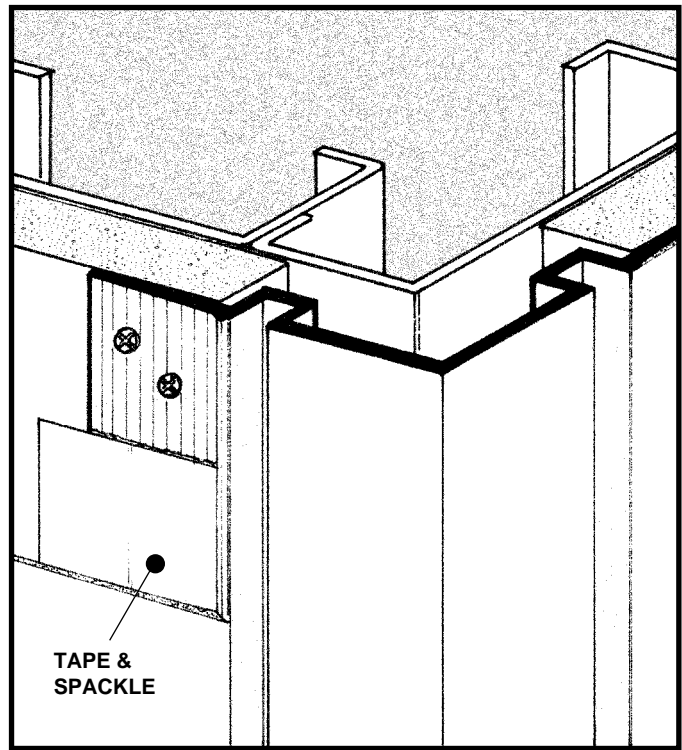
For use with conventional metal stud construction and 1/2" or 5/8" GPDW.

The SO-ER-90 provides a corner bead with built in decorative vertical reveals. This corner can be used in any instance where you wish to replace a standard square corner bead with a decorative feature. The vertical reveals can be painted in a complimentary color to the rest of the wall surface, or used isolate the corner itself. They are especially useful in separating different patterns or colors of vinyl wallcoverings. Screws through the grooved fins must always engage metal or wood substructure to ensure proper installation.



SO-ER-90  
NO SCALE

STUD WALL  
PLAN/SECTION



All details, methods and specifications are the exclusive property of Pittcon Softforms® LLC. Pittcon reserves the right to change any specifications or details without prior notification. All Softforms® profiles are available in standard 10' lengths ±1/8" (2.048 M). Other lengths are available as special order items. For custom shapes, sizes, or for special finishes, please contact the factory or your nearest Pittcon sales representative.