

SO-R060-90

FABRIC TUCK CORNER

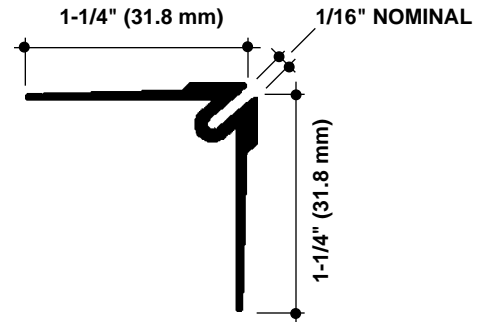
SAMPLE SPECIFICATION

specify as: SOFTFORMS® Model # SO-R060-90

Pitcon SOFTFORMS® LLC

| | |
|--------------------------|-----------------------|
| 6409 Rhode Island Avenue | 3330 W. Flower Street |
| Riverdale, MD 20737 | Phoenix, AZ 85017 |
| (800) 637-7638 | (800) 637-7638 |
| (301) 927-1000 | (602) 233-9100 |
| Fax: (301) 699-8690 | Fax: (602) 233-9400 |

The extruded aluminum profile shall incorporate a continuous integral fin for surface contact to conventionally installed gypsum drywall. The fins shall be 7/8" wide and shall be tapered to the edge. The tapered fins shall be punched with holes staggered to accept standard screw fastening. A series of continuous grooves shall be extruded into the face of the fins to provide greater bonding surface. The extruded profiles shall be primed with corrosion-resistant primer compatible with materials normally in use in conjunction with commercial interiors, i.e.: joint compound, latex and enamel paints, and wall covering adhesives.



MATERIAL: Aluminum alloy.....6063 T5 or equal
Finish.....Factory primed

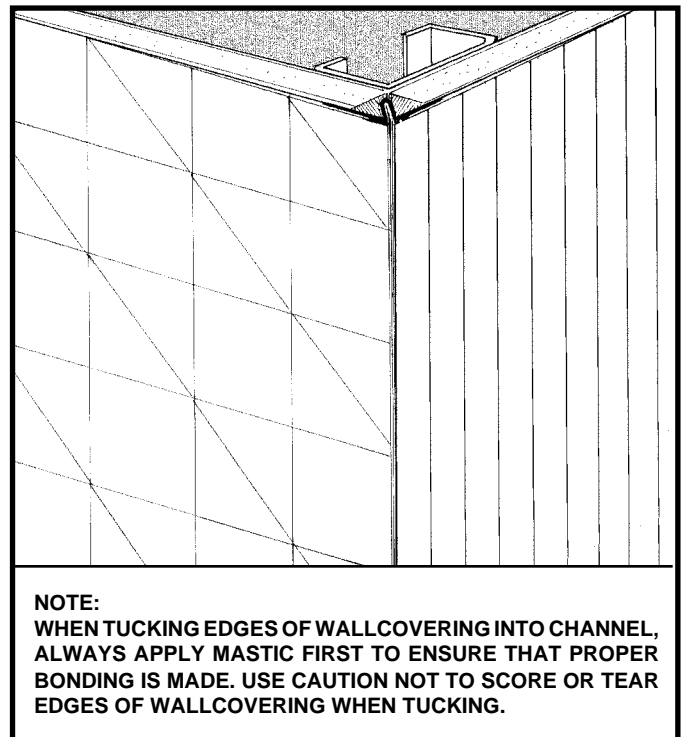
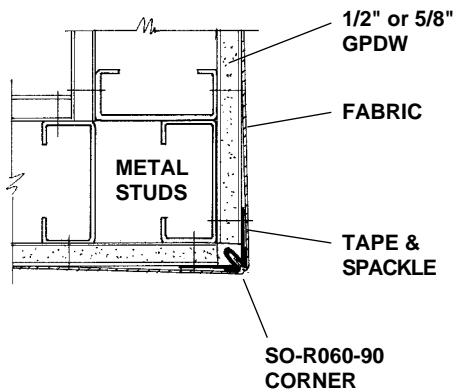
SO-R060-90
NO SCALE

90° OUTSIDE CORNER
WITH FABRIC TUCK

EXAMPLE DETAIL

For use with conventional metal stud construction and 1/2" or 5/8" GPDW.

The SO-R060-90 permits a concealed joint for dissimilar wall coverings which meet at a 90° intersection. The wall coverings are inserted by means of a thin "pizza wheel" tool. A small amount of adhesive in the reveal is desirable to prevent any pull away. Screws through the grooved fins must always engage metal or wood substructure to ensure proper installation.



NOTE:
WHEN TUCKING EDGES OF WALLCOVERING INTO CHANNEL, ALWAYS APPLY MASTIC FIRST TO ENSURE THAT PROPER BONDING IS MADE. USE CAUTION NOT TO SCORE OR TEAR EDGES OF WALLCOVERING WHEN TUCKING.

SO-R060-90 + 2-1/2" STUD WALL
NO SCALE PLAN/SECTION

All details, methods and specifications are the exclusive property of Pitcon Softforms® LLC. Pitcon reserves the right to change any specifications or details without prior notification. All Softforms® profiles are available in standard 10' lengths ±1/8" (2.048 M). Other lengths are available as special order items. For custom shapes, sizes, or for special finishes, please contact the factory or your nearest Pitcon sales representative.

Softforms®

PREFORMED ARCHITECTURAL PROFILES
FOR DRYWALL CONSTRUCTION