

SWBR-300

CUSTOM WALL BASE W/ REVEAL

SAMPLE SPECIFICATION

specify as: SOFTFORMS®

Model # SWBR-300-2

Model # SWBR-300-8

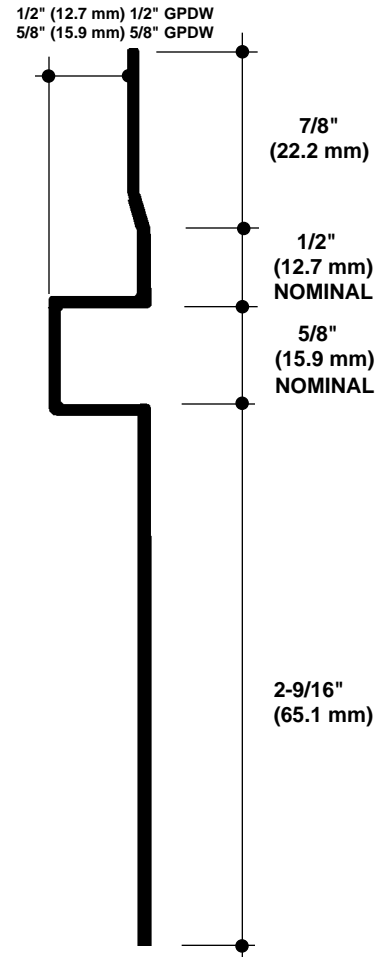
Pittcon SOFTFORMS® LLC

6409 Rhode Island Avenue
Riverdale, MD 20737
(800) 637-7638
(301) 927-1000
Fax: (301) 699-8690

3330 W. Flower Street
Phoenix, AZ 85017
(800) 637-7638
(602) 233-9100
Fax: (602) 233-9400

The formed aluminum profile shall incorporate a continuous integral fin for surface contact to conventionally installed gypsum drywall. The fins shall be 1-3/8" wide nominal. The formed profile shall be primed with corrosion-resistant primer compatible with materials normally in use in conjunction with commercial interiors, i.e.: joint compound, latex and enamel paints, and wall covering adhesives.

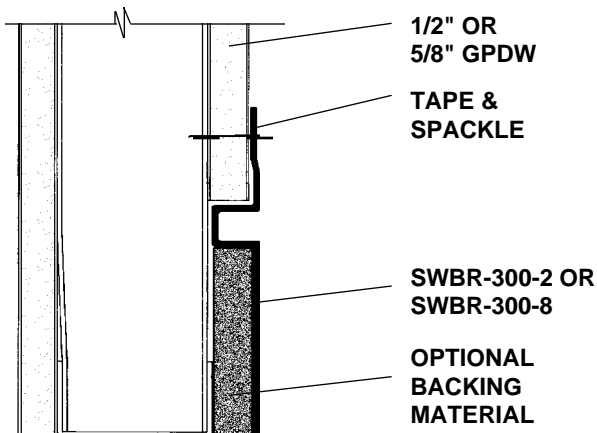
MATERIAL: Aluminum alloy.....3003 H-14 or equal
Finish.....Factory primed
Metal thickness......062" typical



EXAMPLE DETAIL

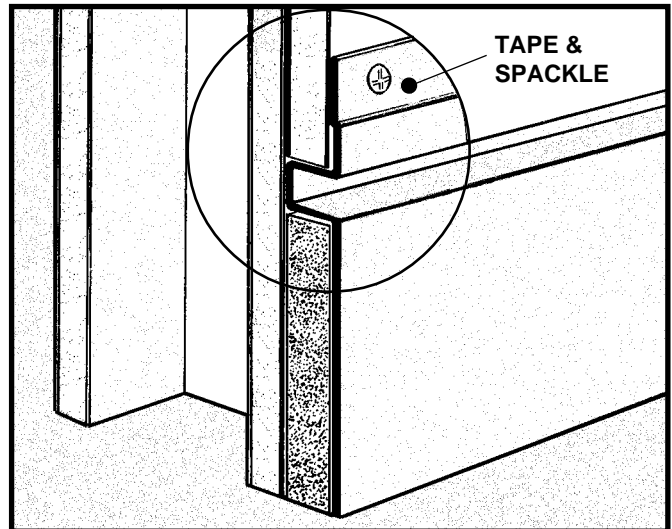
For use with conventional metal stud construction and 1/2" or 5/8" GPDW.

The custom SWBR-300 permits the construction of a flush wall base with a decorative 1/2" wide reveal. It is available for use with either 1/2" or 5/8" thick GPDW. An optional backer of MDF can be factory attached to the back of the base, or wood blocking can be field applied. Screws through the fins must always engage metal or wood substructure to ensure proper installation.



SWBR-300 WITH STUD WALL SECTION
NO SCALE

SWBR-300-2 (Shown) WALL BASE WITH 1/2" REVEAL
NO SCALE



All details, methods and specifications are the exclusive property of Pittcon Softforms® LLC. Pittcon reserves the right to change any specifications or details without prior notification. All Softforms® profiles are available in standard 10' lengths ±1/8" (2.048 M). Other lengths are available as special order items. For custom shapes, sizes, or for special finishes, please contact the factory or your nearest Pittcon sales representative.