

SWBR-400

CUSTOM WALL BASE W/ REVEAL

SAMPLE SPECIFICATION

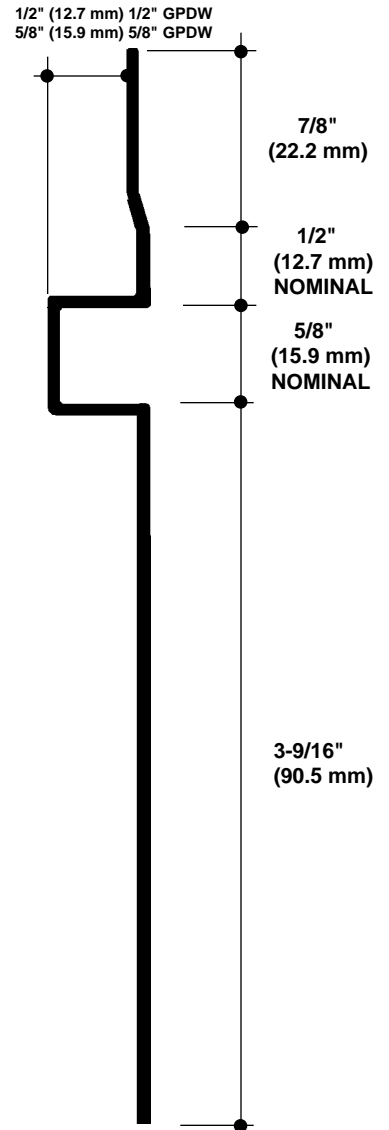
specify as: SOFTFORMS® Model # SWBR-400-2
 Model # SWBR-400-8

Pittcon SOFTFORMS® LLC

6409 Rhode Island Avenue	3330 W. Flower Street
Riverdale, MD 20737	Phoenix, AZ 85017
(800) 637-7638	(800) 637-7638
(301) 927-1000	(602) 233-9100
Fax: (301) 699-8690	Fax: (602) 233-9400

The formed aluminum profile shall incorporate a continuous integral fin for surface contact to conventionally installed gypsum drywall. The fins shall be 1-3/8" wide nominal. The formed profile shall be primed with corrosion-resistant primer compatible with materials normally in use in conjunction with commercial interiors, i.e.: joint compound, latex and enamel paints, and wall covering adhesives.

MATERIAL: Aluminum alloy.....3003 H-14 or equal
 Finish.....Factory primed
 Metal thickness......062" typical

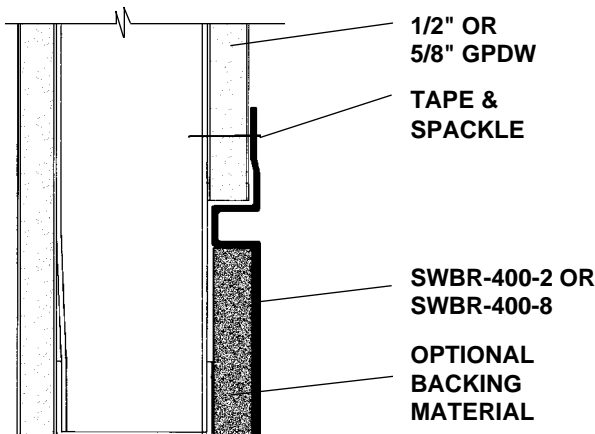


SWBR-400-2 (Shown) **WALL BASE**
NO SCALE **WITH 1/2" REVEAL**

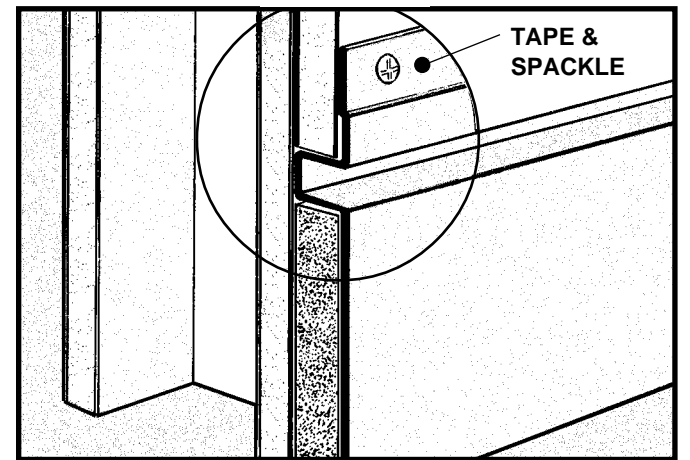
EXAMPLE DETAIL

For use with conventional metal stud construction and 1/2" or 5/8" GPDW.

The custom SWBR-400 permits the construction of a flush wall base with a decorative 1/2" wide reveal. It is available for use with either 1/2" or 5/8" thick GPDW. An optional backer of MDF can be factory attached to the back of the base, or wood blocking can be field applied. Screws through the fins must always engage metal or wood substructure to ensure proper installation.



SWBR-400 **WITH STUD WALL**
NO SCALE **SECTION**



All details, methods and specifications are the exclusive property of Pittcon Softforms® LLC. Pittcon reserves the right to change any specifications or details without prior notification. All Softforms® profiles are available in standard 10' lengths ± 1/8" (2.048 M). Other lengths are available as special order items. For custom shapes, sizes, or for special finishes, please contact the factory or your nearest Pittcon sales representative.