

SCS-2X Custom

DOUBLE CORNER STEP

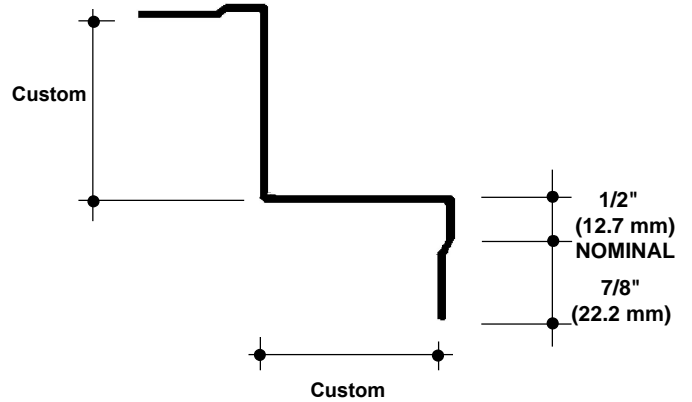
SAMPLE SPECIFICATION

specify as: SOFTFORMS® Model # SCS-2X Custom

Pittcon SOFTFORMS® LLC

6409 Rhode Island Avenue	3330 W. Flower Street
Riverdale, MD 20737	Phoenix, AZ 85017
(800) 637-7638	(800) 637-7638
(301) 927-1000	(602) 233-9100
Fax: (301) 699-8690	Fax: (602) 233-9400

The formed aluminum profile shall incorporate a continuous integral fin for surface contact to conventionally installed gypsum drywall. The fins shall be 1-3/8" wide nominal. The formed profile shall be primed with corrosion-resistant primer compatible with materials normally in use in conjunction with commercial interiors, i.e.: joint compound, latex and enamel paints, and wall covering adhesives.



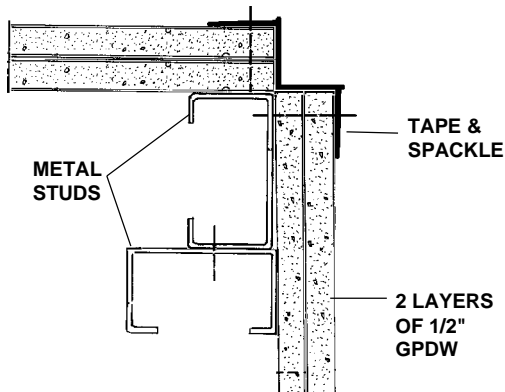
MATERIAL: Aluminum alloy.....3003 T14 or equal
Finish.....Factory primed

SCS-2X(100-100) 1" x 1" CORNER STEP
NO SCALE SECTION

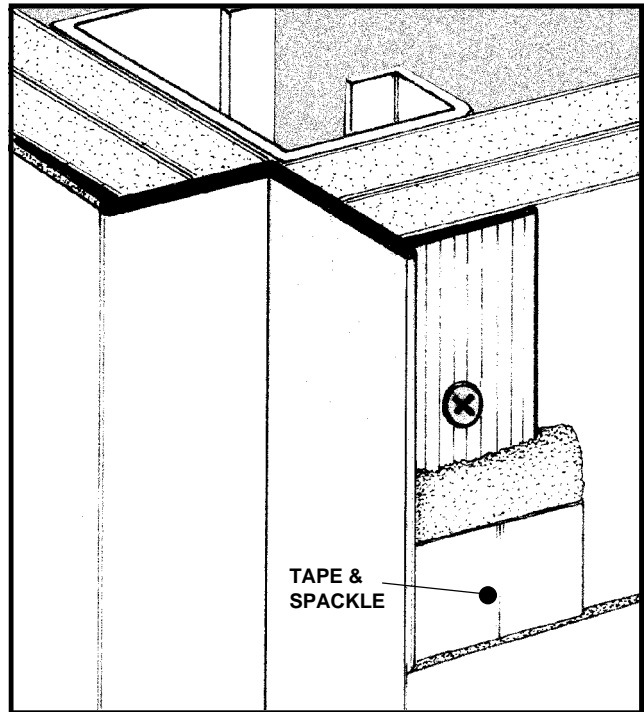
EXAMPLE DETAIL

For use with conventional metal stud construction and 5/8" GPDW.

The SCS-2X Custom will permit a wide range of horizontal and vertical decorative treatments to walls, ceilings, soffits, column covers, etc. Screws through the grooved fins must always engage metal or wood substructure to ensure proper installation.



SCS-2X Custom & STUD WALLS
NO SCALE PLAN/SECTION



All details, methods and specifications are the exclusive property of Pittcon Softforms® LLC. Pittcon reserves the right to change any specifications or details without prior notification. All Softforms® profiles are available in standard 10' lengths ±1/8" (2.048 M). Other lengths are available as special order items. For custom shapes, sizes, or for special finishes, please contact the factory or your nearest Pittcon sales representative.