

SO-9-075C

CHAMFERED CORNER

SAMPLE SPECIFICATION

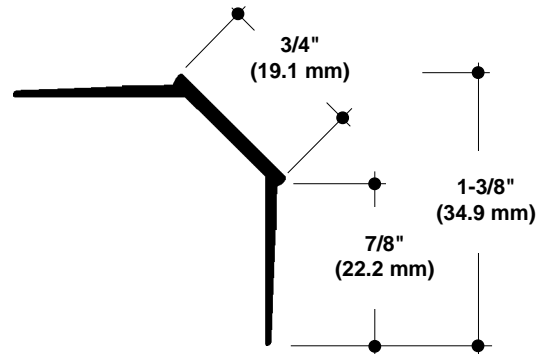
specify as: SOFTFORMS® Model # SO-9-075C

Pitcon SOFTFORMS® LLC

6409 Rhode Island Avenue
Riverdale, MD 20737
(800) 637-7638
(301) 927-1000
Fax: (301) 699-8690

3330 W. Flower Street
Phoenix, AZ 85017
(800) 637-7638
(602) 233-9100
Fax: (602) 233-9400

The extruded aluminum profile shall incorporate a continuous integral fin for surface contact to conventionally installed gypsum drywall. The fins shall be 7/8" wide and shall be tapered to the edge. The tapered fins shall be punched with holes staggered to accept standard screw fastening. A series of continuous grooves shall be extruded into the face of the fins to provide greater bonding surface. The extruded profiles shall be primed with corrosion-resistant primer compatible with materials normally in use in conjunction with commercial interiors, i.e.: joint compound, latex and enamel paints, and wall covering adhesives.



MATERIAL: Aluminum alloy.....6063 T5 or equal
Finish.....Factory primed

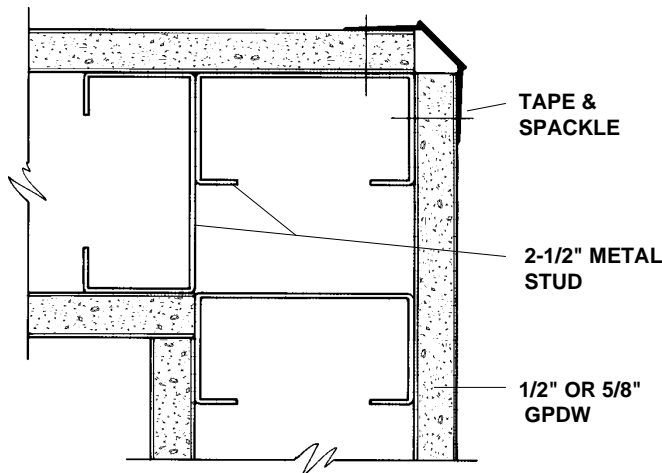
SO-9-075C
NO SCALE

CHAMFERED CORNER
SECTION

EXAMPLE DETAIL

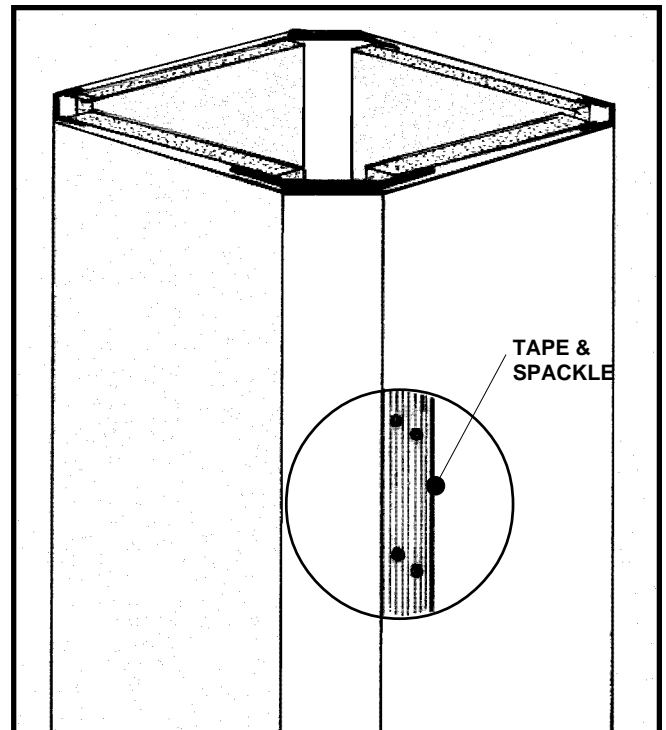
For use with conventional metal stud construction and 1/2" or 5/8" GPDW.

Three metal studs at corner conditions will allow the SO-9-075C profile to work with the standard metal track. Screws through the grooved fins must always engage metal or wood substructure to ensure proper installation.



SO-9-075C + 2-1/2" STUD WALL

NO SCALE **PLAN/SECTION**



All details, methods and specifications are the exclusive property of Pitcon Softforms® LLC. Pitcon reserves the right to change any specifications or details without prior notification. All Softforms® profiles are available in standard 10' lengths ±1/8" (2.048 M). Other lengths are available as special order items. For custom shapes, sizes, or for special finishes, please contact the factory or your nearest Pitcon sales representative.