

SWCGT

Glazing Track-End Wall

SAMPLE SPECIFICATION

specify as: SOFTFORMS® Model # SWCGT-XXX-X

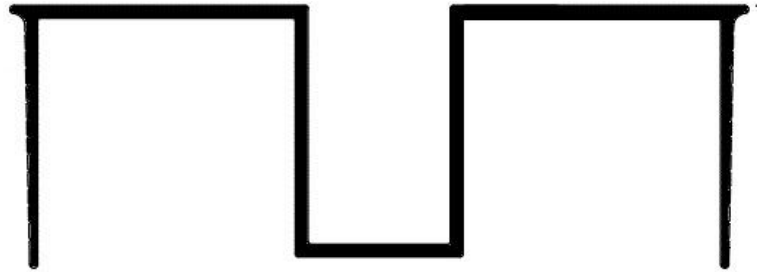
Pittcon Industries

6409 Rhode Island Avenue
 Riverdale, MD 20737
 (800) 637-7638
 (301) 927-1000
 Fax: (301) 699-8690

Phoenix, AZ 85017
 (800) 637-7638
 (602) 233-9100
 Fax: (602) 233-9400

The extruded aluminum profile shall incorporate a continuous integral fin for surface contact to conventionally installed gypsum drywall. The fins shall be 1 3/8" wide and shall be tapered to the edge. The tapered fins will need a drill and counter sink for standard screw fastening. A series of continuous grooves shall be extruded into the face of the fins to provide greater bonding surface. The extruded profiles shall be primed with corrosion-resistant primer compatible with materials normally in use in conjunction with commercial interiors, i.e.: joint compound, latex and enamel paints, and wall covering adhesives.

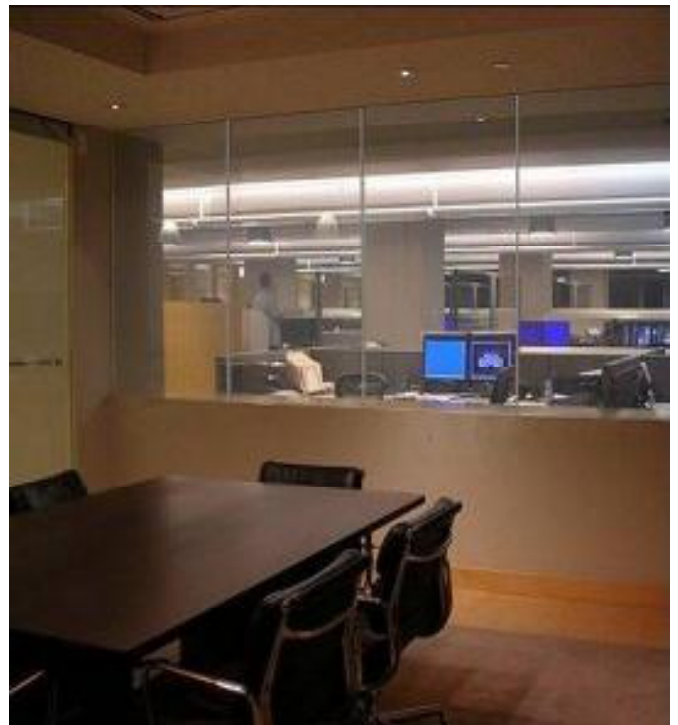
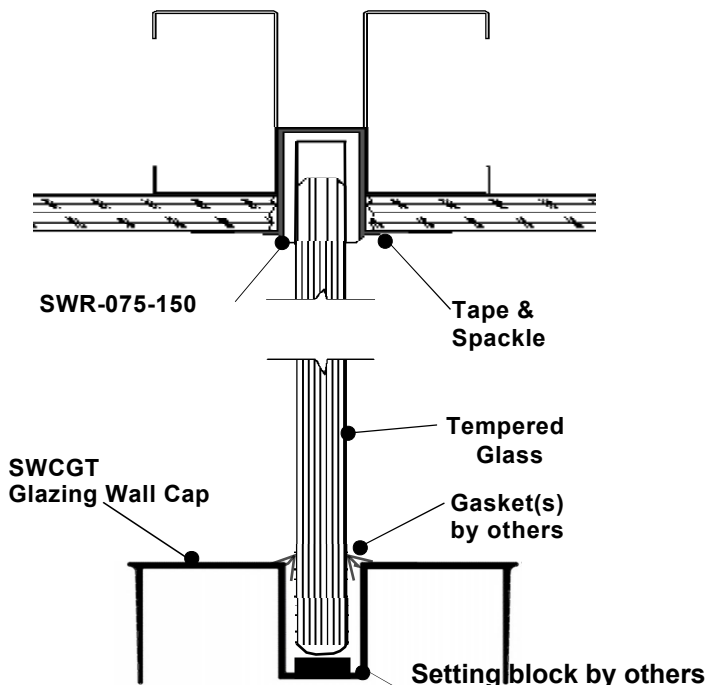
MATERIAL: Aluminum alloy.....6063 T5 or equal
 Finish.....Factory primed



Model No.	Wall Size
SWCGT-212-2	2-1/2" stud w/ 1/2" GPDW for 3 1/2" Wall
SWCGT-212-8	2-1/2" stud w/ 5/8" GPDW for 3 3/4" Wall
SWCGT-358-2	3-5/8" stud w/ 1/2" GPDW for 4 5/8" Wall
SWCGT-358-8	3-5/8" stud w/ 5/8" GPDW for 4 7/8" Wall

SWCGT **Glazing Track**
NO SCALE **TYPICAL SECTION**

Example Detail



SWCGT **Glazing Track** **CONCEPT USAGE**
NO SCALE

All details, methods and specifications are the exclusive property of Pittcon Softforms® LLC. Pittcon reserves the right to change any specifications or details without prior notification. All Softforms® profiles are available in standard 10' lengths ± 1/8" (2.048M). Other lengths are available as special order items. For custom shapes, sizes, or for special finishes, please contact the factory or your nearest Pittcon sales representative.

Softforms
 PREFORMED ARCHITECTURAL PROFILES SW 26.0
 FOR DRYWALL CONSTRUCTION