

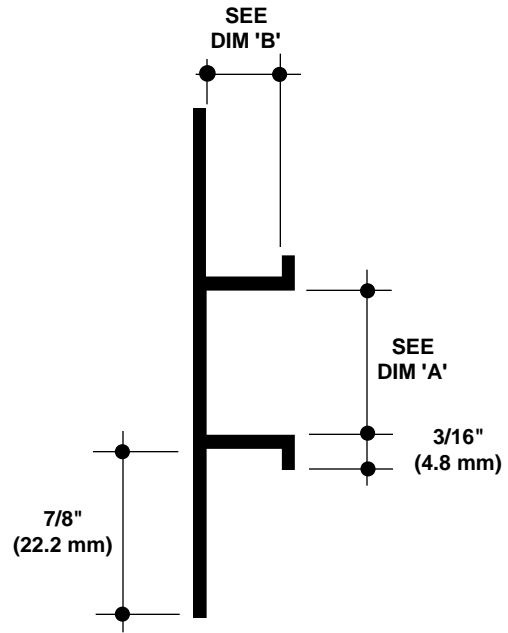
DCS SERIES CHANNEL SCREED

Specify as: Pittcon Plaster Molding

Model No. DCS-xx-xxx
DCS-xx-V-xxx (vented)

MATERIAL: Aluminum alloy.....6063 T5
Finish.....Clear Anodized
Thickness......050" nominal

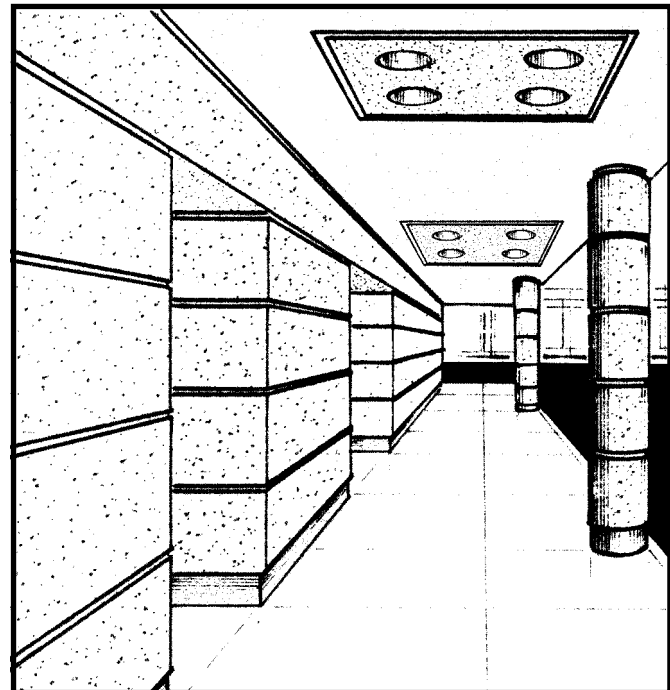
Many optional finishes are available. Consult factory for pricing and availability. Finishes meet or exceed AAMA standards for scratches or blemishes.



NO SCALE

TYPICAL SECTION

Model No.	Width-Dim 'A'	Depth-Dim 'B'
DCS-50-50	1/2" (12.7mm)	1/2" (12.7mm)
DCS-50-V-50	1/2" (12.7mm)	1/2" (12.7mm)
DCS-50-75	3/4" (19.1mm)	1/2" (12.7mm)
DCS-50-V-75	3/4" (19.1mm)	1/2" (12.7mm)
DCS-50-100	1" (25.4mm)	1/2" (12.7mm)
DCS-50-V-100	1" (25.4mm)	1/2" (12.7mm)
DCS-50-150	1-1/2" (38.1mm)	1/2" (12.7mm)
DCS-50-V-150	1-1/2" (38.1mm)	1/2" (12.7mm)
DCS-50-200	2" (50.8mm)	1/2" (12.7mm)
DCS-50-V-200	2" (50.8mm)	1/2" (12.7mm)
DCS-50-300	3" (76.2mm)	1/2" (12.7mm)
DCS-50-V-300	3" (76.2mm)	1/2" (12.7mm)
DCS-50-400	4" (101.6mm)	1/2" (12.7mm)
DCS-50-V-400	4" (101.6mm)	1/2" (12.7mm)
<hr/>		
DCS-625-50	1/2" (12.7mm)	5/8" (15.9mm)
DCS-625-V-50	1/2" (12.7mm)	5/8" (15.9mm)
DCS-625-75	3/4" (19.1mm)	5/8" (15.9mm)
DCS-625-V-75	3/4" (19.1mm)	5/8" (15.9mm)
DCS-625-100	1" (25.4mm)	5/8" (15.9mm)
DCS-625-V-100	1" (25.4mm)	5/8" (15.9mm)
DCS-625-150	1-1/2" (38.1mm)	5/8" (15.9mm)
DCS-625-V-150	1-1/2" (38.1mm)	5/8" (15.9mm)
DCS-625-200	2" (50.8mm)	5/8" (15.9mm)
DCS-625-V-200	2" (50.8mm)	5/8" (15.9mm)
DCS-625-300	3" (76.2mm)	5/8" (15.9mm)
DCS-625-V-300	3" (76.2mm)	5/8" (15.9mm)
DCS-625-400	4" (101.6mm)	5/8" (15.9mm)
DCS-625-V-400	4" (101.6mm)	5/8" (15.9mm)



© 2008 Pittcon Industries

West

2090 Del Rio Way, Unit B
Ontario, CA 91761
Phone: (909) 773-0001
Fax: (909) 773-0091

3330 W. Flower Street
Phoenix, AZ 85017
Phone: (602) 233-9100
Fax: (602) 233-9400

**Pittcon
Industries**
DIVISION OF PITTCO ARCHITECTURAL METALS, LLC
800 637-7638

East

6409 Rhode Island Ave.
Riverdale, MD 20737
Phone: (301) 927-1000
Fax: (301) 699-8690