

FCM-75

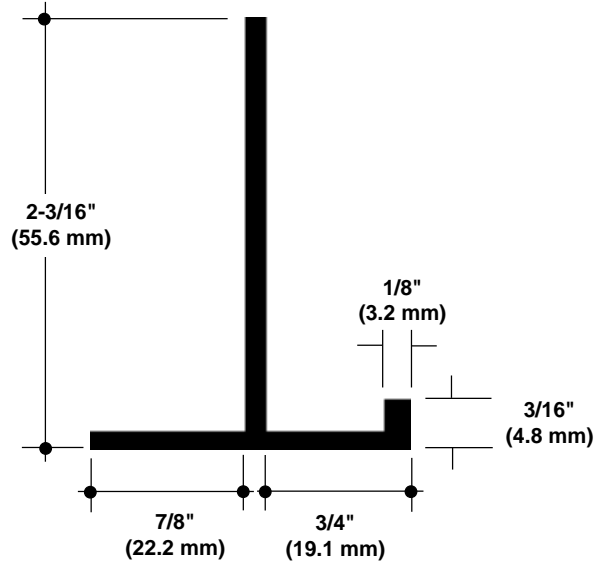
FASCIA CORNER

Specify as: Pittcon Plaster Molding

Model No. FCM-75

MATERIAL: Aluminum alloy.....6063 T5
 Finish.....Clear Anodized
 Thickness......050" nominal

Many optional finishes are available. Consult factory for pricing and availability. Finishes meet or exceed AAMA standards for scratches or blemishes.

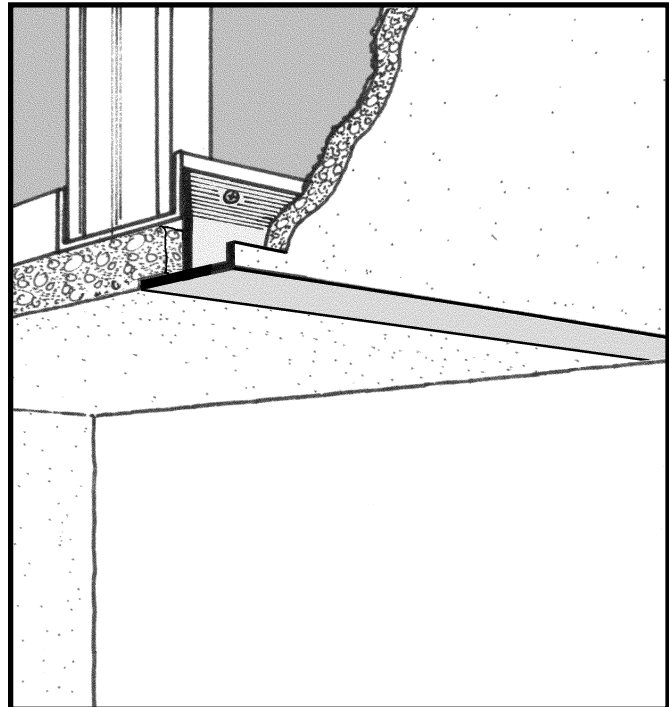


NO SCALE

TYPICAL SECTION

Model No.	Width	Depth
-----------	-------	-------

FCM-75	1-5/8 (41.3mm)	3/4" (19.1mm)
--------	----------------	---------------



© 2008 Pittcon Industries

West

2090 Del Rio Way, Unit B
 Ontario, CA 91761
 Phone: (909) 773-0001
 Fax: (909) 773-0091

3330 W. Flower Street
 Phoenix, AZ 85017
 Phone: (602) 233-9100
 Fax: (602) 233-9400

Pittcon Industries
 DIVISION OF PITTCOON ARCHITECTURAL METALS, LLC
 800 637-7638

East

6409 Rhode Island Ave.
 Riverdale, MD 20737
 Phone: (301) 927-1000
 Fax: (301) 699-8690