

# FPM SERIES

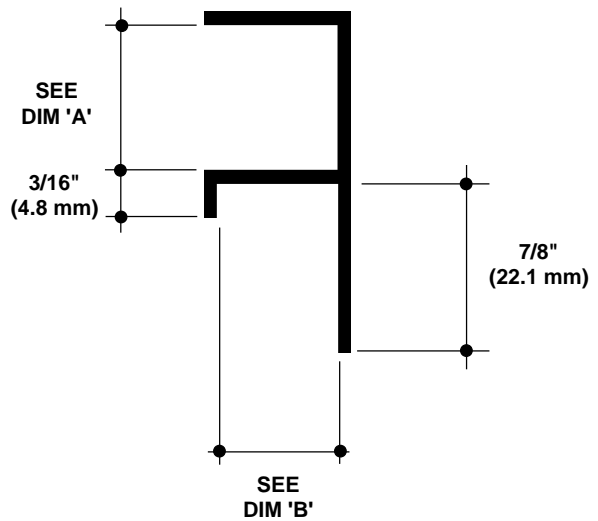
## 'F' MOLDING

Specify as: Pittcon Plaster Molding

Model No. FPM-xx-xxx  
FPM-xx-V-xxx (vented)

MATERIAL: Aluminum alloy.....6063 T5  
Finish.....Clear Anodized  
Thickness......050" nominal

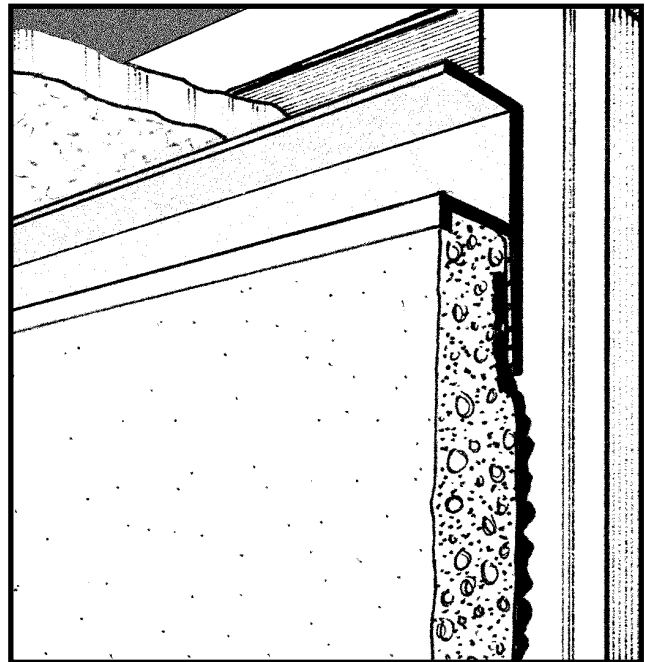
Many optional finishes are available. Consult factory for pricing and availability. Finishes meet or exceed AAMA standards for scratches or blemishes.



NO SCALE

TYPICAL SECTION

| Model No.    | Width-Dim 'A'   | Depth-Dim 'B' |
|--------------|-----------------|---------------|
| FPM-75-50    | 1/2" (12.7mm)   | 3/4" (19.1mm) |
| FPM-75-V-50  | 1/2" (12.7mm)   | 3/4" (19.1mm) |
| FPM-75-75    | 3/4" (19.1mm)   | 3/4" (19.1mm) |
| FPM-75-V-75  | 3/4" (19.1mm)   | 3/4" (19.1mm) |
| FPM-75-100   | 1" (25.1mm)     | 3/4" (19.1mm) |
| FPM-75-V-100 | 1" (25.1mm)     | 3/4" (19.1mm) |
| FPM-75-150   | 1-1/2" (38.1mm) | 3/4" (19.1mm) |
| FPM-75-V-150 | 1-1/2" (38.1mm) | 3/4" (19.1mm) |
| FPM-75-200   | 2" (50.8mm)     | 3/4" (19.1mm) |
| FPM-75-V-200 | 2" (50.8mm)     | 3/4" (19.1mm) |



© 2008 Pittcon Industries

*West*

2090 Del Rio Way, Unit B  
Ontario, CA 91761  
Phone: (909) 773-0001  
Fax: (909) 773-0091

3330 W. Flower Street  
Phoenix, AZ 85017  
Phone: (602) 233-9100  
Fax: (602) 233-9400

**Pittcon Industries**  
DIVISION OF PITTCOON ARCHITECTURAL METALS, LLC  
800 637-7638

*East*

6409 Rhode Island Ave.  
Riverdale, MD 20737  
Phone: (301) 927-1000  
Fax: (301) 699-8690