

XDM SERIES

CORNER MOLD

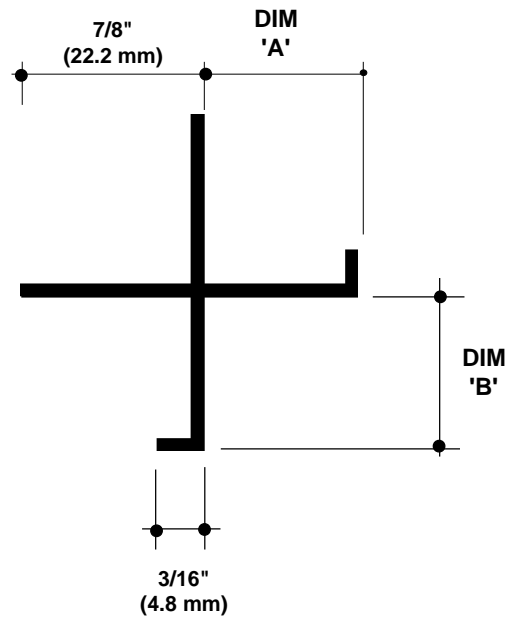
Specify as: Pittcon Plaster Molding

Model No. XDM-50-50

Model No. XDM-625-625

MATERIAL: Aluminum alloy.....6063 T5
 Finish.....Clear Anodized
 Thickness......050" nominal

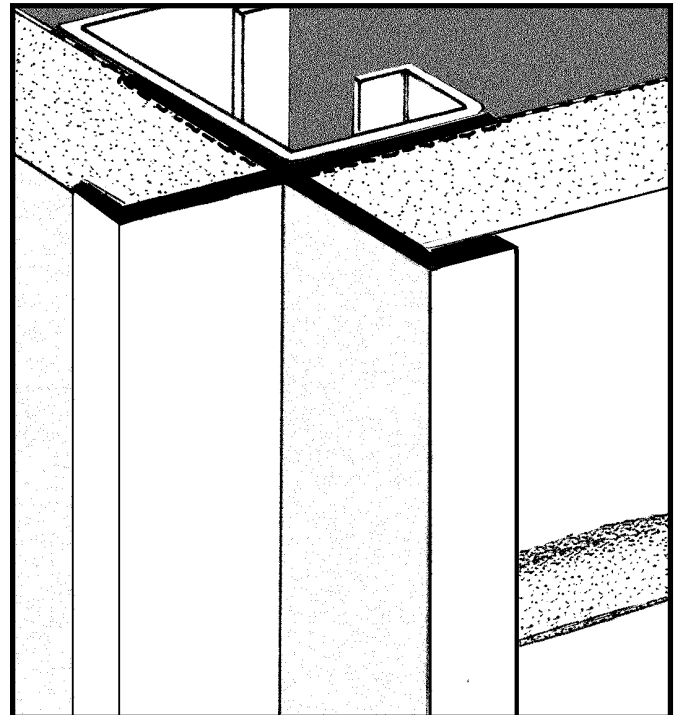
Many optional finishes are available. Consult factory for pricing and availability. Finishes meet or exceed AAMA standards for scratches or blemishes.



NO SCALE

TYPICAL SECTION

Model No.	Width-Dim 'A'	Depth-Dim 'B'
XDM-50-50	1/2" (12.7mm)	1/2" (12.7mm)
XDM-625-625	5/8" (15.9mm)	5/8" (15.9mm)



© 2008 Pittcon Industries



3330 W. Flower Street
 Phoenix, AZ 85017
 Phone: (602) 233-9100
 Fax: (602) 233-9400

Pittcon Industries
DIVISION OF PITTCOON ARCHITECTURAL METALS, LLC
800 637-7638



6409 Rhode Island Ave.
 Riverdale, MD 20737
 Phone: (301) 927-1000
 Fax: (301) 699-8690